

Accessing the STAC Wireless Network

St. Thomas Aquinas College

Accessing the STAC Wireless Network

| | |
|--|----|
| Introduction | 3 |
| Connecting with Windows XP | 4 |
| Verify the correct software version..... | 4 |
| Verify that the wireless adapter is properly installed | 5 |
| Configure the STAC Wireless Network | 6 |
| Connecting to the STAC Wireless Network..... | 9 |
| Connecting with Windows Vista | 13 |
| Verify that the wireless adapter is properly installed | 13 |
| Configure the STAC Wireless Network | 14 |
| Connecting to the STAC Wireless Network..... | 18 |
| Connecting with Other OS and Third Party Tools | 21 |
| Troubleshooting and Help | 21 |

Introduction

For the convenience of its students and staff, St. Thomas Aquinas College has installed wireless Ethernet networks (802.11a, 802.11b, and 802.11g) across the campus.

In order to ensure the sufficient levels of network security, users will be required to configure their computers to authenticate with the Wireless network using Protected Extensible Authentication Protocol, or PEAP (pronounced “peep”). PEAP is a method used to transmit authentication information securely over wired and wireless networks and was developed by Microsoft, Cisco, and RSA Security.

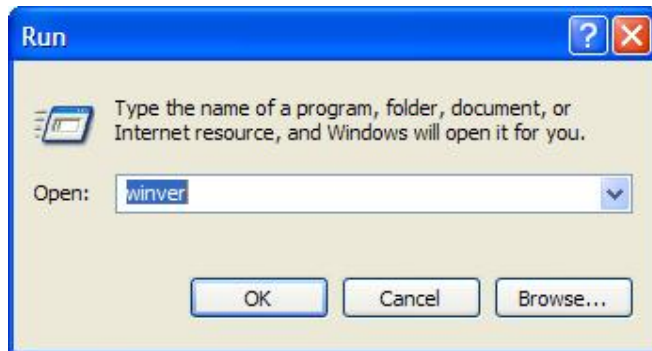
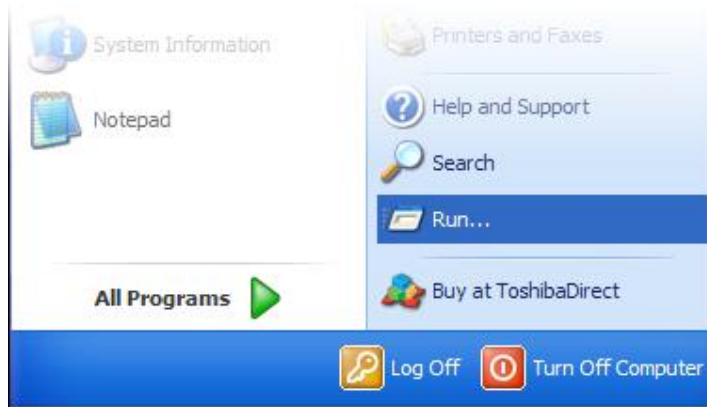
The purpose of this document is to describe the steps needed to configure the PEAP connection between a client PC (desktop or laptop) and the STAC wireless network using Wireless Zero Configuration, a service built into the Windows XP and Windows Vista operating systems. While your wireless adapter may provide other drivers and/or software that will allow it to connect to the STAC wireless network, the specific configuration steps will vary.

Connecting with Windows XP

Verify the correct software version

Windows XP Service Pack 2 must be installed on your XP machine in order to continue this process. To check the version of service pack, follow the instructions below:

Click Start > Click Run > Type winver > Click OK



Accessing the STAC Wireless Network

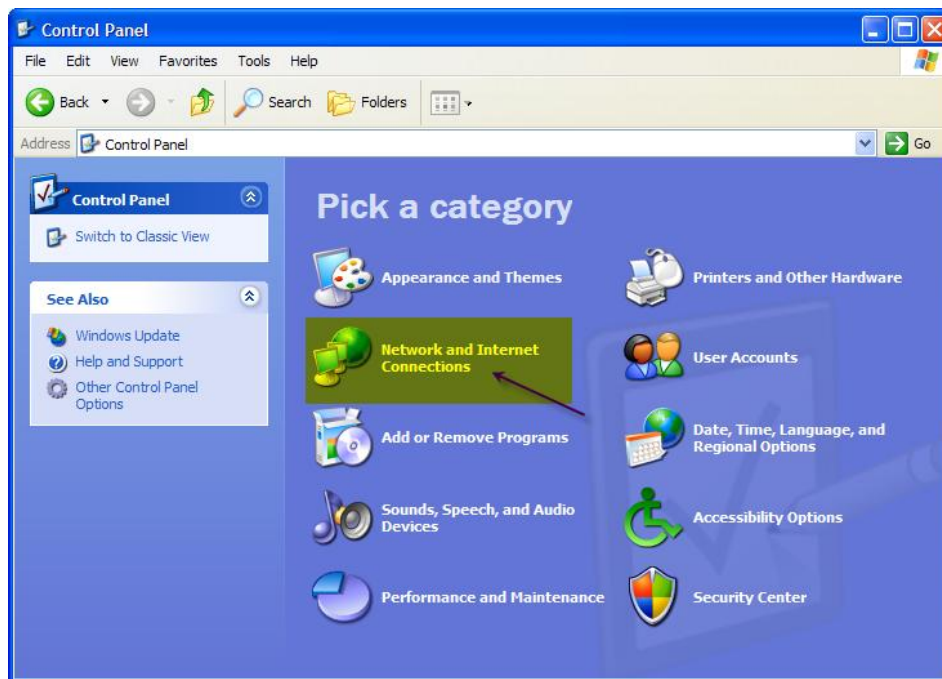


If you don't see Service Pack 2 (or higher), please download and install the SP2 patch from Microsoft before continuing further.

Verify that the wireless adapter is properly installed

You must have Administrator's privileges to configure your wireless network.

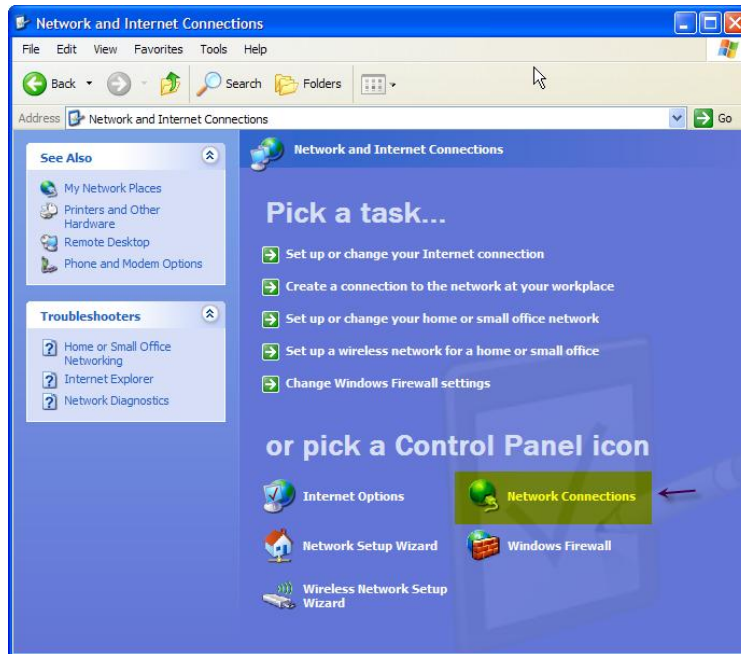
Click Start > Click Control Panel > Click Network and Internet Connection



Accessing the STAC Wireless Network

Click Network Connection

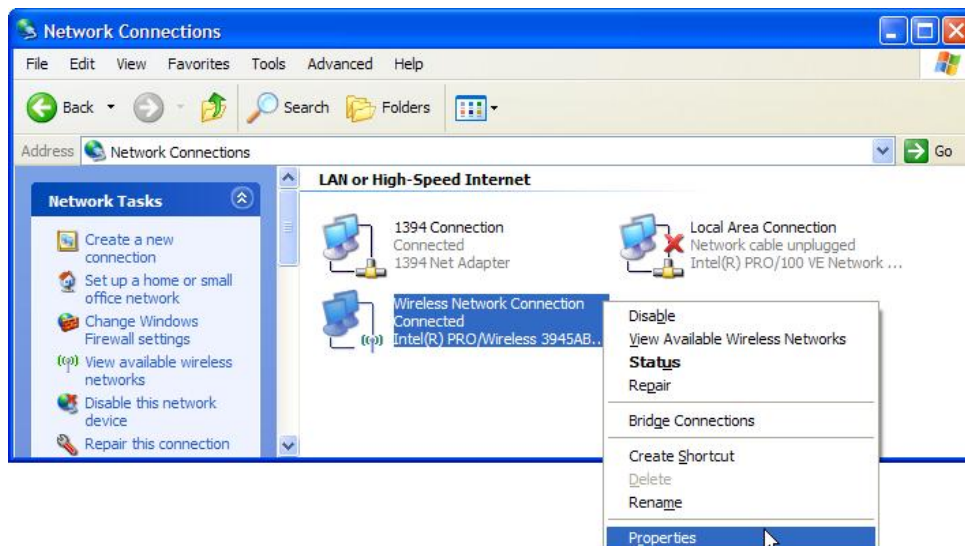
Note: Do not use the Wireless Network Setup Wizard or the Wireless Network Utility that comes with your wireless network card.



Note: In addition to any other types of network interfaces your computer has, you must have a Wireless Network Connection available. If you do not see a Wireless Network Connection, your wireless adapter may not be installed or configured properly.

Configure the STAC Wireless Network

Right Click Wireless Network Connection > Click Properties



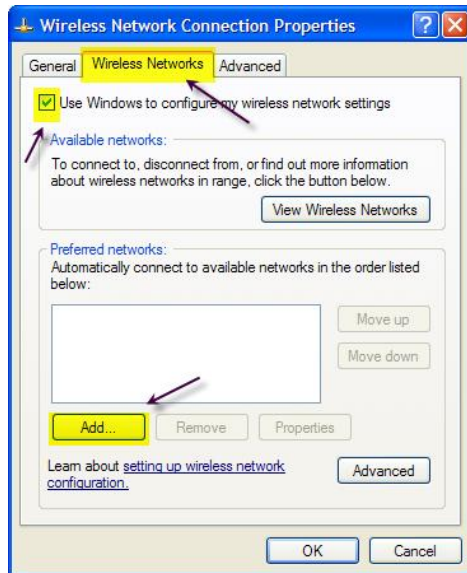
Accessing the STAC Wireless Network

Select Wireless Networks Tab

Enable the 'Use Windows to configure my wireless network settings' checkbox

Note: If the 'stacwifi' network already exists in your 'Preferred networks' list, select and remove that entry.

Select 'Add'



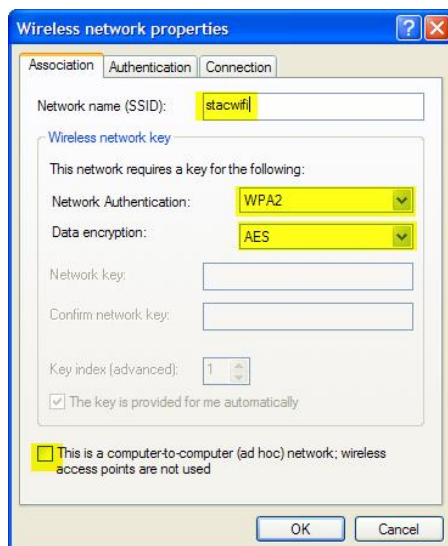
Configure the following network properties:

Network name (SSID): stacwifi

Network Authentication: WPA2 (or WPA if WPA2 is not available)

Data Encryption: AES (or TKIP)

Note: Make sure the "This is a computer-to-computer [ad hoc] network; wireless access points are not used" checkbox is not enabled

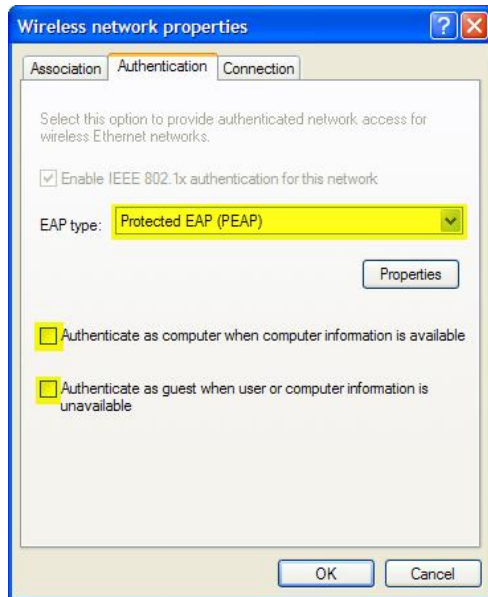


Accessing the STAC Wireless Network

Select the Authentication tab and configure as follows:

Change the EAP type to Protected EAP (PEAP)

Uncheck the “Authenticate as computer when computer information is available” and “Authenticate as guest when user or computer information is unavailable” checkboxes.

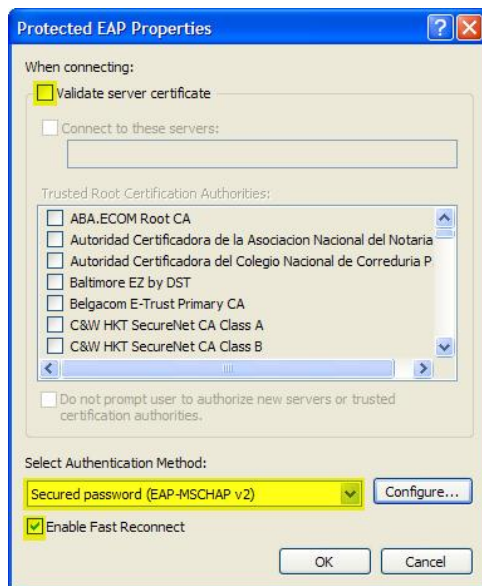


Click Properties

Uncheck the ‘Validate server certificate’ checkbox

Select ‘Secured password (EAP-MSCHAP v2)’ as the Authentication Method

Unselect ‘Enable Fast Reconnect’ (This causes username / password credentials to be cached which can lead to authentication issues).



Accessing the STAC Wireless Network

Click Configure

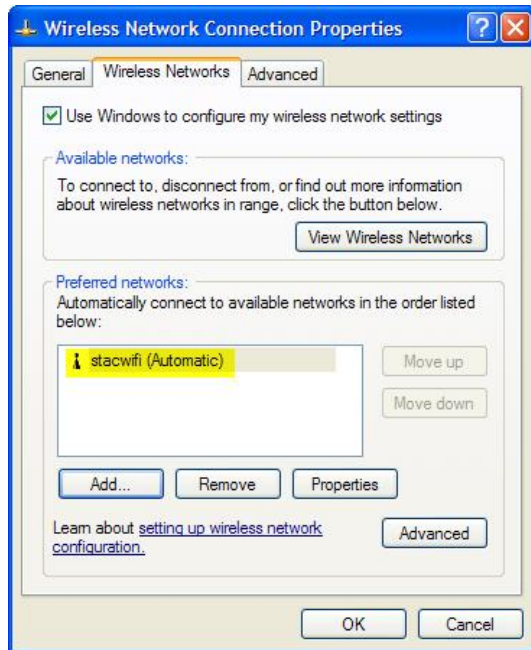
Uncheck the checkbox and click 'OK'



Click OK to exit out from Protected EAP Properties

Click OK to exit out from Wireless Network Properties

You should now see the 'stacwifi' network in your list of Preferred networks.

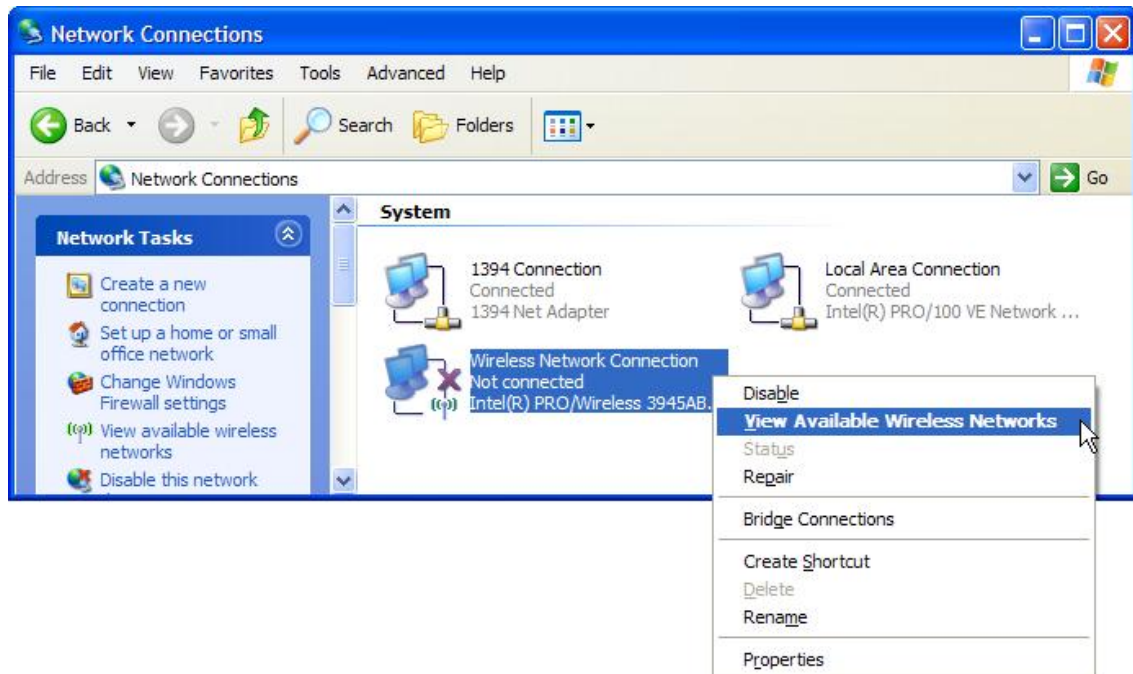


Connecting to the STAC Wireless Network

In order to connect to the STAC Wireless network, return to the Network Connections dialog box (accessed via Control Panel->Network Connections).

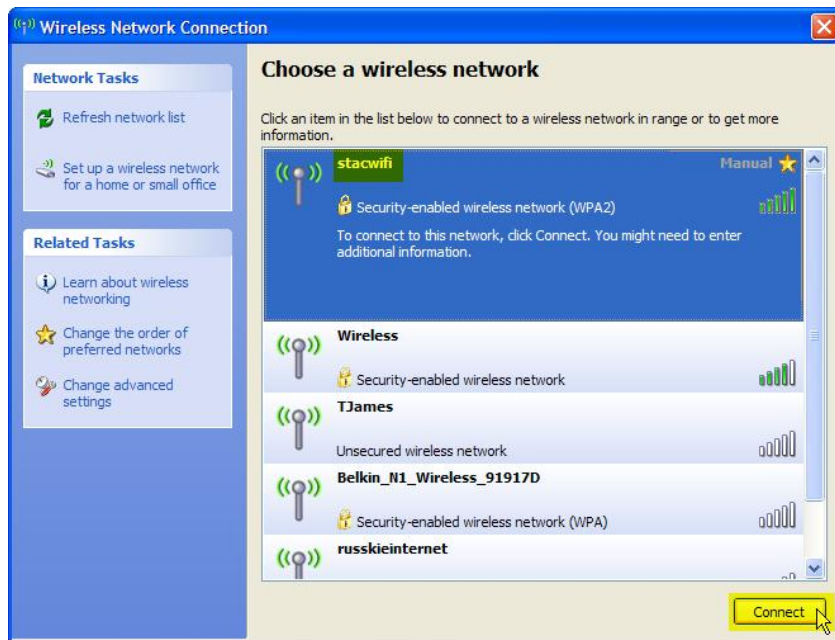
Right click on the 'Wireless Network Connection' and select 'View Available Wireless Networks'

Accessing the STAC Wireless Network



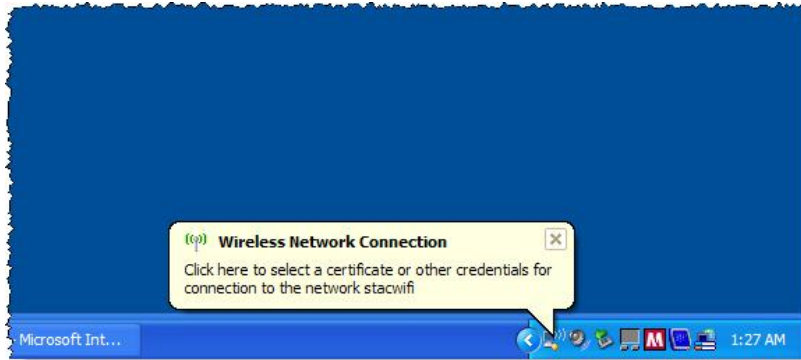
When within range, the stacwifi network will be listed as an available network.

Select the stacwifi network and click ‘Connect’



Once your computer has associated with the access point, click the “Wireless Network Connection” pop-up balloon which will appear at the bottom right of the screen.

Accessing the STAC Wireless Network



Enter your assigned User ID and Password

Your STAC Wireless Student ID is the first letter of your first name followed by letters of your last name (all lowercase). Your password is your birth date in MMDDYYYY form. (Note: Leave the Logon domain blank)

User name example: George Washington = gWASHINGTON

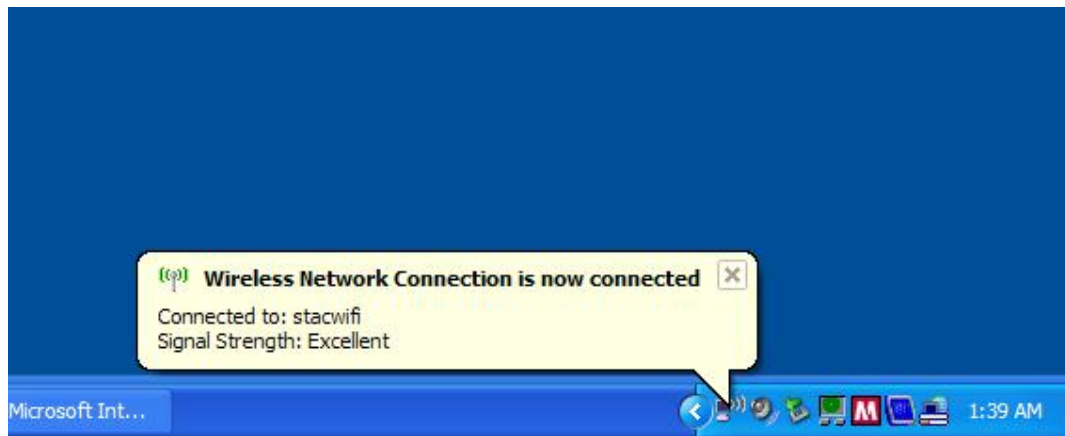
Password example: July 21, 2006 = 07212006

Click OK



Congratulations! You should now be connected to the STAC wireless network.

Accessing the STAC Wireless Network



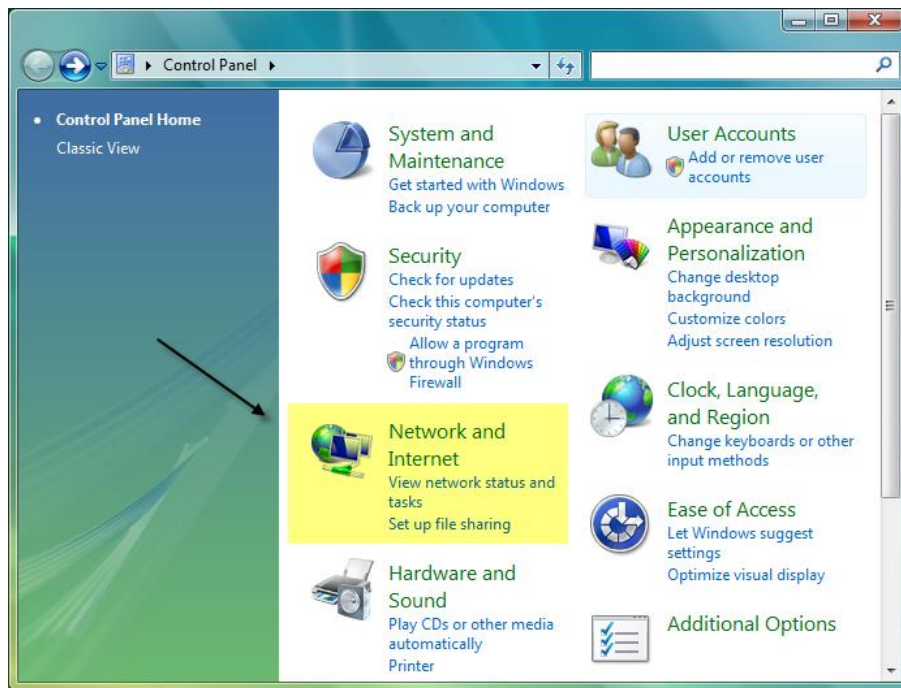
Connecting with Windows Vista

Connecting to the STAC wireless network using Vista, Microsoft's latest OS, is similar to the process already described when connecting via Windows XP. The following steps and screen shots will provide the necessary step by step instructions.

Verify that the wireless adapter is properly installed

You must have Administrator's privileges to configure your wireless network.

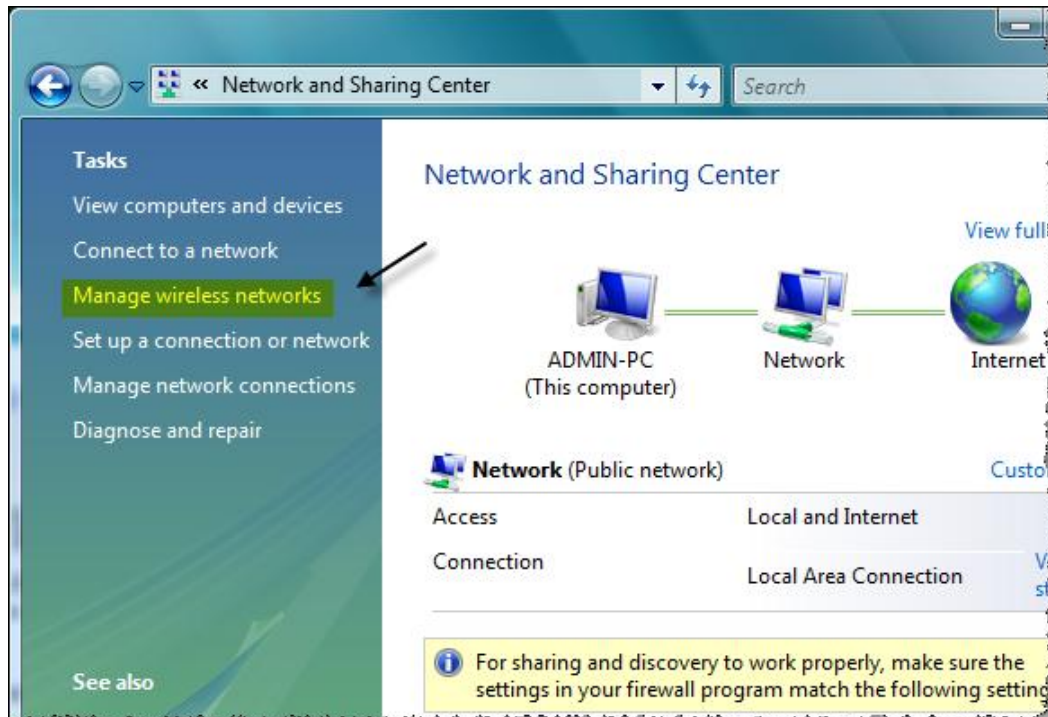
Click Start > Click Control Panel > Click Network and Internet Connection



Click Network and Sharing Center

Note: Do not use the Wireless Network Setup Wizard or the Wireless Network Utility that comes with your wireless network card. While they may be used to successfully connect to the STAC Wireless Network, this document details the necessary steps using the WZC service built into the Windows OS.

Accessing the STAC Wireless Network



Configure the STAC Wireless Network

Locate and click the Add button



Note: If the 'stacwifi' network already exists in your 'Preferred networks' list, select and remove that entry.

Accessing the STAC Wireless Network

From the ‘Manually connect to a wireless network’ dialog box, select ‘Manually create a network profile’ and configure the following network properties:

Network name (SSID): stacwifi

Network Authentication: WPA2 - Enterprise

Data Encryption: AES (or TKIP)

Note: You can either select or unselect the option to connect automatically to the STAC Wireless network. You should however select to connect even if the network is not broadcasting (in the event that the STAC SSIDs are not broadcast).

Manually connect to a wireless network

Enter information for the wireless network you want to add

Network name: stacwifi

Security type: WPA2-Enterprise

Encryption type: AES

Security Key/Passphrase: Display characters

Start this connection automatically

Connect even if the network is not broadcasting

Warning: If you select this option, your computer's privacy might be at risk.

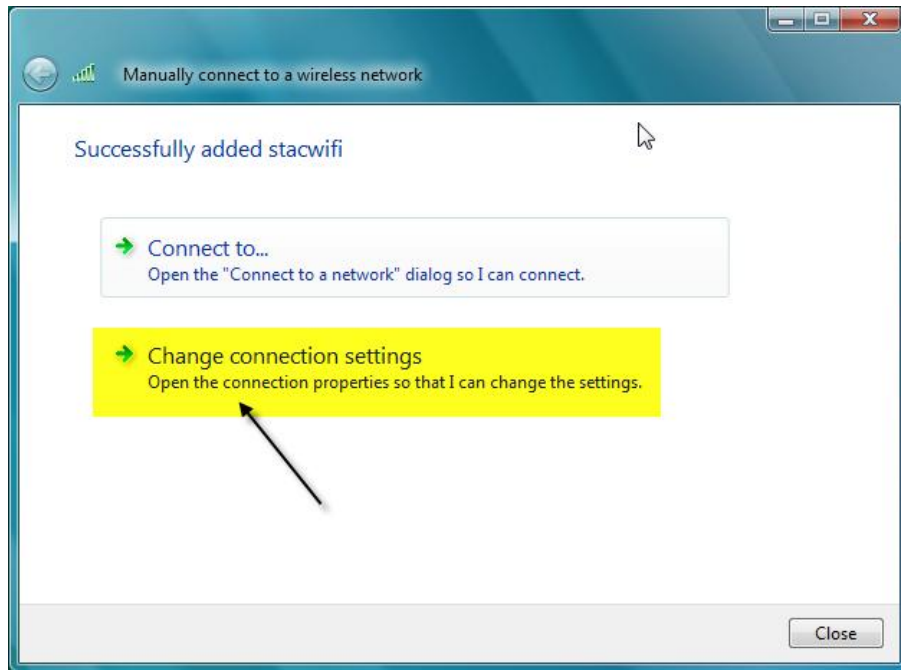
Next Cancel

Select Next

This will bring you to a dialog window confirming that you have successfully added the ‘stacwifi’ wireless network

Select ‘Change connection settings’

Accessing the STAC Wireless Network

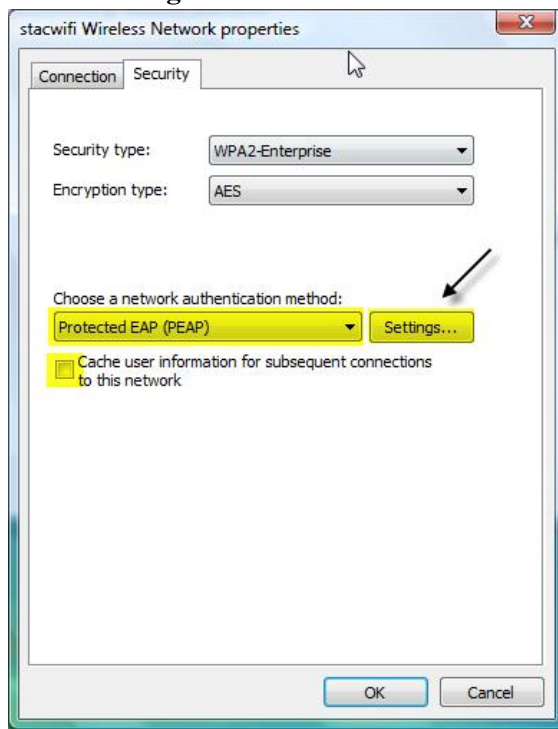


Select the Security tab and configure as follows:

Verify that the EAP type is set to Protected EAP (PEAP)

Uncheck the "Cache user information for subsequent connections to this network".

Select Settings



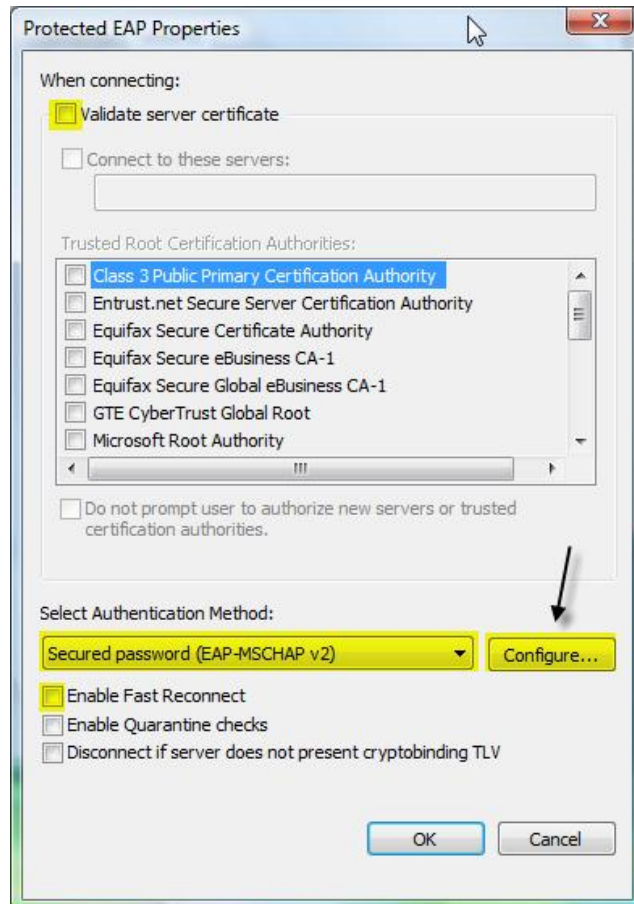
Accessing the STAC Wireless Network

Click Properties

Uncheck the 'Validate server certificate' checkbox

Select 'Secure password (EAP-MSCHAP v2)' as the Authentication Method

Unselect 'Enable Fast Reconnect' (Enabling this may cause username / password credentials to be cached which can lead to authentication issues).



Click Configure

Uncheck the checkbox and click 'OK'



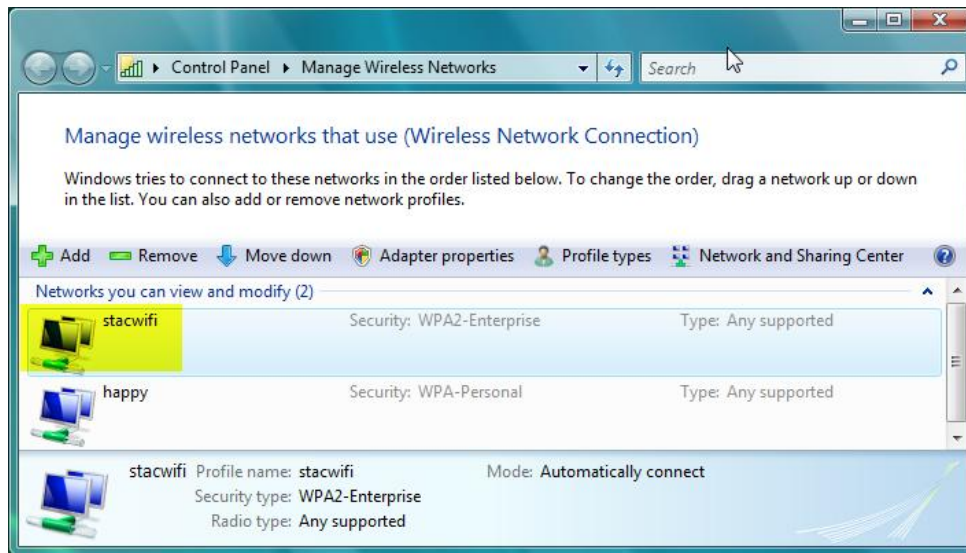
Accessing the STAC Wireless Network

Click OK to exit out from Protected EAP Properties

Click OK to exit out from Wireless Network Properties

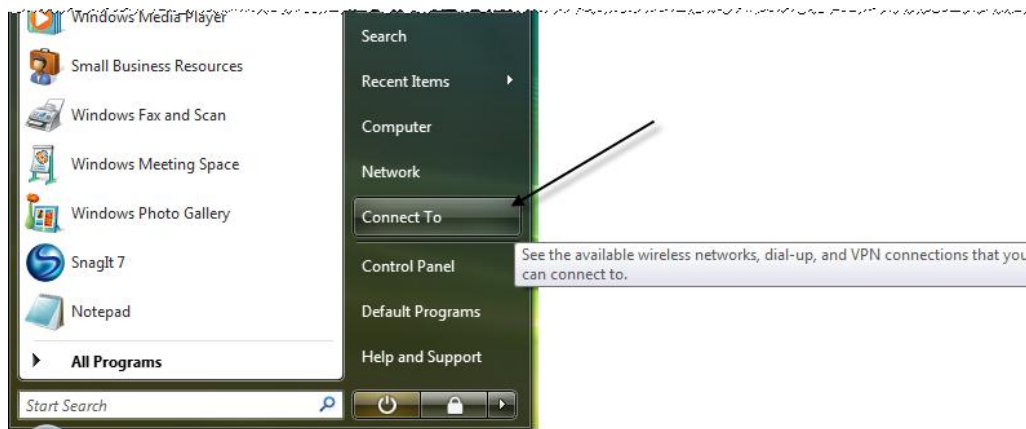
Click Close to exit the Manually connect to a wireless network dialog

You should now see the 'stacwifi' network in your list of Preferred networks.



Connecting to the STAC Wireless Network

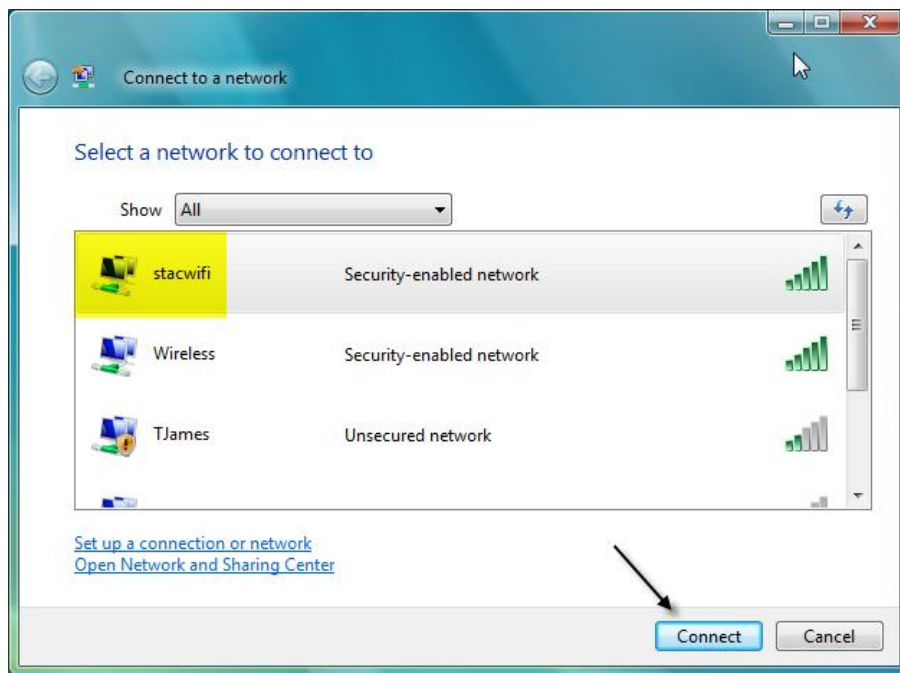
In order to connect to the STAC Wireless network, select 'Connect to Network' accessible from the Start menu



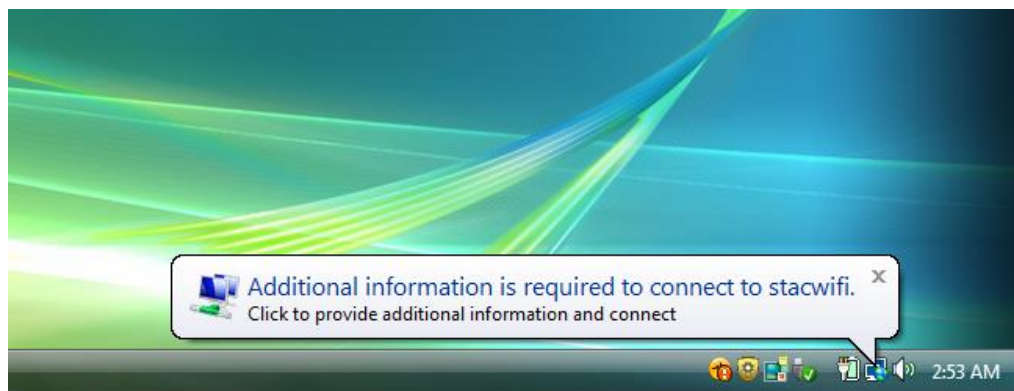
Accessing the STAC Wireless Network

When within range, the **stacwifi** network will be listed as an available network.

Select the stacwifi network and click ‘Connect’



Once your computer has associated with the access point, click the “Additional information is required to connect to **stacwifi**” pop-up balloon which will appear at the bottom right of the screen.



Enter your assigned User ID and Password

Your STAC Wireless Student ID is the first letter of your first name followed by letters of your last name (all lowercase). Your password is your birth date in MMDDYYYY form. (Note: Leave the Logon domain blank)

Accessing the STAC Wireless Network

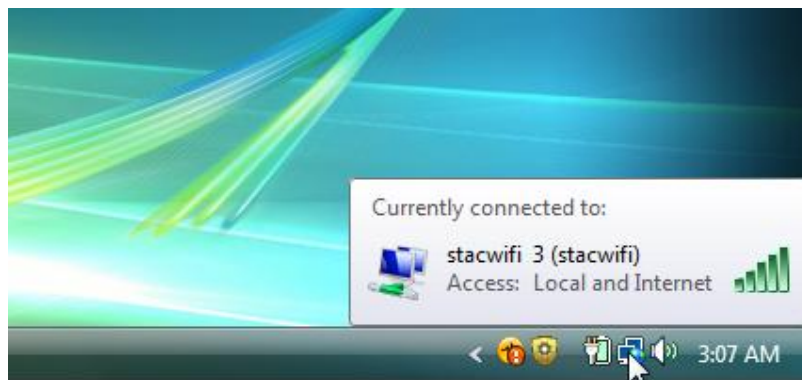
User name example: George Washington = gwashington

Password example: July 21, 2006 = 07212006

Click OK



Congratulations! You should now be connected to the STAC wireless network.



Note: When within range of the STAC wireless network and you have configured your profile to automatically connect to the STAC network, you will notice the same popup balloon prompting you for your network credentials. Follow the same procedure described above in order to re-connect to the network.

Connecting with Other OS and Third Party Tools

For other OS types and vendor provided WLAN utilities, the following details should be sufficient in configuring the necessary properties to connect to the STAC Wireless Network.

1. The Wireless Network name (SSID) is 'stacwifi'
2. The authentication type is WPA2 Enterprise (though WPA2 and WPA should also work if necessary)
3. The data encryption type can be either AES or TKIP
4. The EAP type is Protected EAP (PEAP) using the MSCHAP v2 authentication method.
5. The login is your first initial followed by your last name (all lower case) and your password is your birth date (MMDDYYYY).

Troubleshooting and Help

If your connection and/or login attempt fails, contact the STAC IT Help Desk at extension 4046 for further assistance.