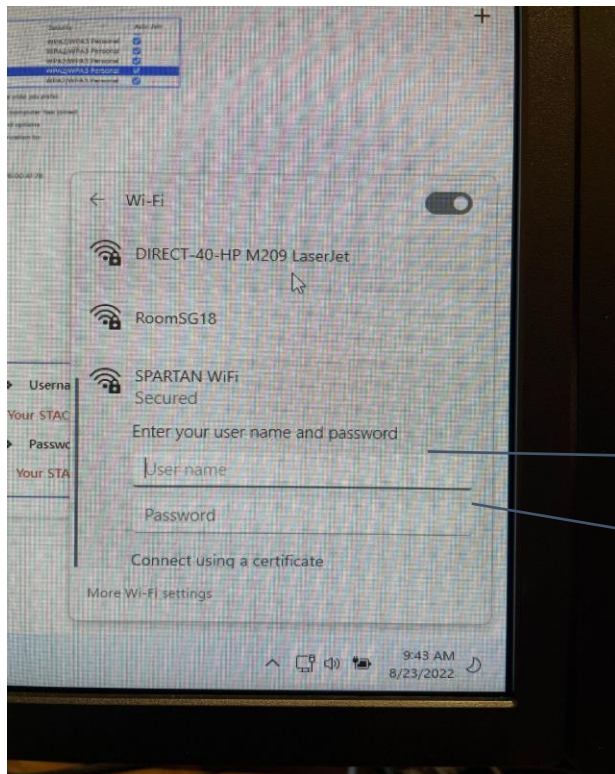


Information Services

How To Connect To SPARTAN WiFi

Windows

- ❖ Find the SSID “SPARTAN WiFi” and Connect
- ❖ Connect to “SPARTAN WiFi” using your STAC Email and Password



❖ Username is:
Your STAC email address

❖ Password is:
Your STAC email password

MacBook

How To Add Network

1. Go to Network Settings
2. Select Network Name “SPARTAN WiFi”
3. Enter Username and Password
4. Click Connect



❖ Username is:
Your STAC email address

❖ Password is:
Your STAC email password

Information Services

iPhone

Connecting to “SPARTAN WiFi” again using your email & password

The screenshot shows an iPhone 'Enter Password' dialog for 'SPARTAN WiFi'. It has three buttons at the top: 'Cancel', 'Enter Password', and 'Join'. Below are two input fields: 'Username' with a key icon and ': johndoe18@stac.edu', and 'Password' with a key icon and ': Email password'. A blue-bordered callout box on the right contains the following text:

- ❖ Username is:
Your STAC email address
- ❖ Password is:
Your STAC email password

Android

❖ Find the SSID “SPARTAN WiFi”

NOTE:
SOME ANDROID PHONE SUCH AS THE GOOGLE PIXEL DO REQUIRE A CERTIFICATION.
IF YOUR PHONE REQUIRE A CERTIFICATION FILE CONTACT [STAC IT](#) FOR ASSISTANCE

❖ Change settings for this SSID and Connect

The screenshot shows an Android 'Commons WiFi' settings screen. It includes the following sections: 'EAP method' (TTLs), 'Identity' (jdoe@stac.edu), 'Password' (your stac email pw), 'CA certificate' (Don't validate), 'Auto reconnect' (toggle on), and 'Advanced' (dropdown). A blue 'Connect' button is at the bottom. A blue-bordered callout box on the right contains the following text:

- ❖ EAP method:
Select **TTLs**
- ❖ Identity:
Your STAC email address
- ❖ Password:
Your STAC email password
- ❖ CA certificate:
Select “Don't validate”

Information Services

Connecting to SPARTAN WiFi On Chromebook

How to Connect to SPARTAN WiFi

- ❖ Go to Network Settings
- ❖ Locate SSID “SPARTAN WiFi”
- ❖ Select “EAP-TTLS” for EAP- method
- ❖ Select “PAP” for EAP phase 2 authentication
- ❖ Select “Do not check” for Server CA certificate
- ❖ Enter your Username (STAC EMAIL)
- ❖ Password (STAC EMAIL PASSWORD)
- ❖ Click “Connect”

Subject alternative name match

Domain suffix match

Identity

johnndoe19@stac.edu → STAC Email

Password

Stac Email Password → STAC Email Password

Anonymous Identity

Save identity and password

Allow other users of this device to use this network

Cancel Connect

Join Wi-Fi network

SSID

SPARTAN WiFi

Security

EAP → Select EAP-TTLS

EAP method

EAP-TTLS

EAP Phase 2 authentication

PAP → Select PAP

Server CA certificate

Do not check → Select Do not check

Subject match